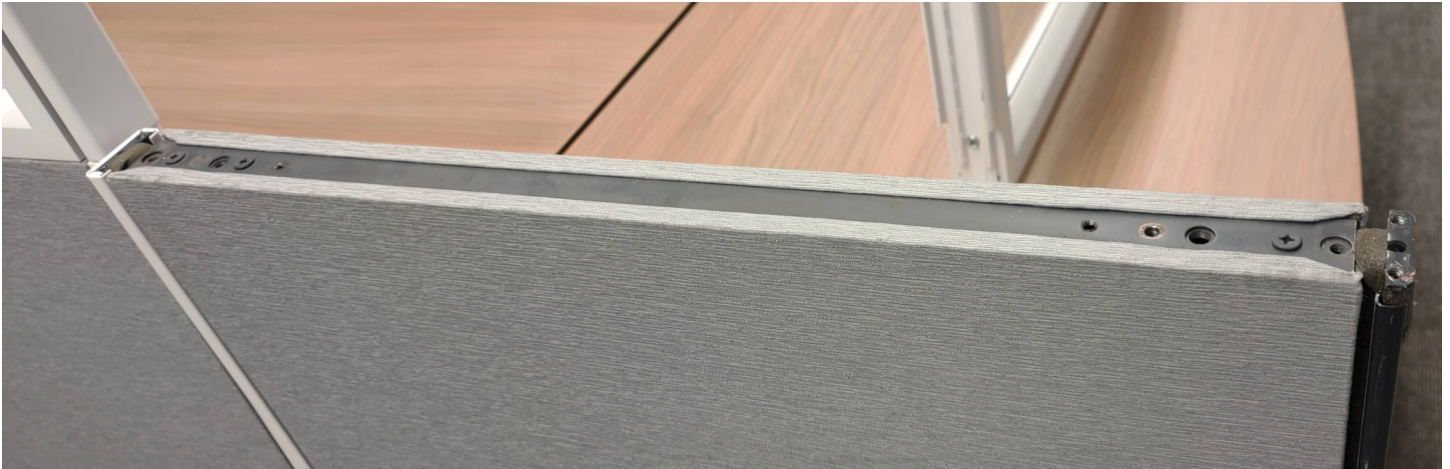


Glass Stacker Installation for Steelcase Avenir Panel System



GATEWAY office furniture

Remove the top cap by gently pulling up on it. Remove the top cap retainer by removing the two screws fixing it to the panel. When done the top of your panel should look like the image below.



Install two strips of foam tape included with the stacker on to the top of the stacker like show in the photo below. It is very common for the top cap retainer to be misshapen from being installed on the panel. These foam strips prevent any light gaps between the misshapen retainer and the top of the stacker.

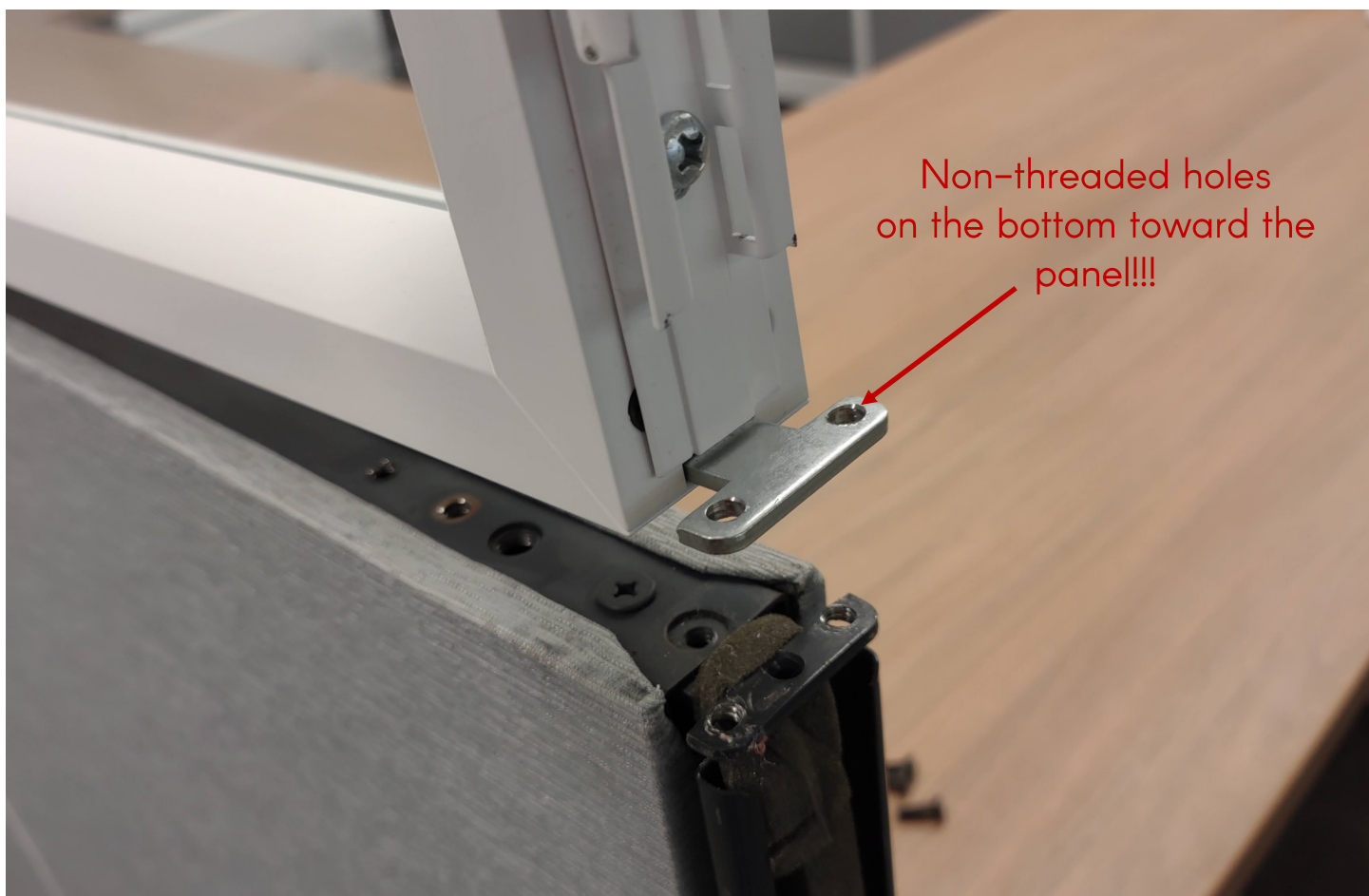


For Technical Assistance Please Call Gateway Office Furniture at 800.815.1224 or email support@gatewayofficefurniture.com

Install the top cap retainer from your panel onto the top of the stacker with the two screws as shown below.



Place the stacker on top of the panel as shown below



For Technical Assistance Please Call Gateway Office Furniture at 800.815.1224 or email support@gatewayofficefurniture.com

Insert two screws on each side of the stacker as shown below and then fully tighten them to attach the stacker to the top of the panel



For Technical Assistance Please Call Gateway Office Furniture at
800.815.1224 or email support@gatewayofficefurniture.com

Once the stacker is fully attached to the panel push in the foam sight stops into the rails as shown and reinstall the finished end covers



For Technical Assistance Please Call Gateway Office Furniture at 800.815.1224 or email support@gatewayofficefurniture.com

There are two types of finished end trims available for the panel with stacker. Every stacker comes with stacker height finished ends by default. This creates a seam where the stacker meets the panel.



An add on option is full length trim which eliminates the seam



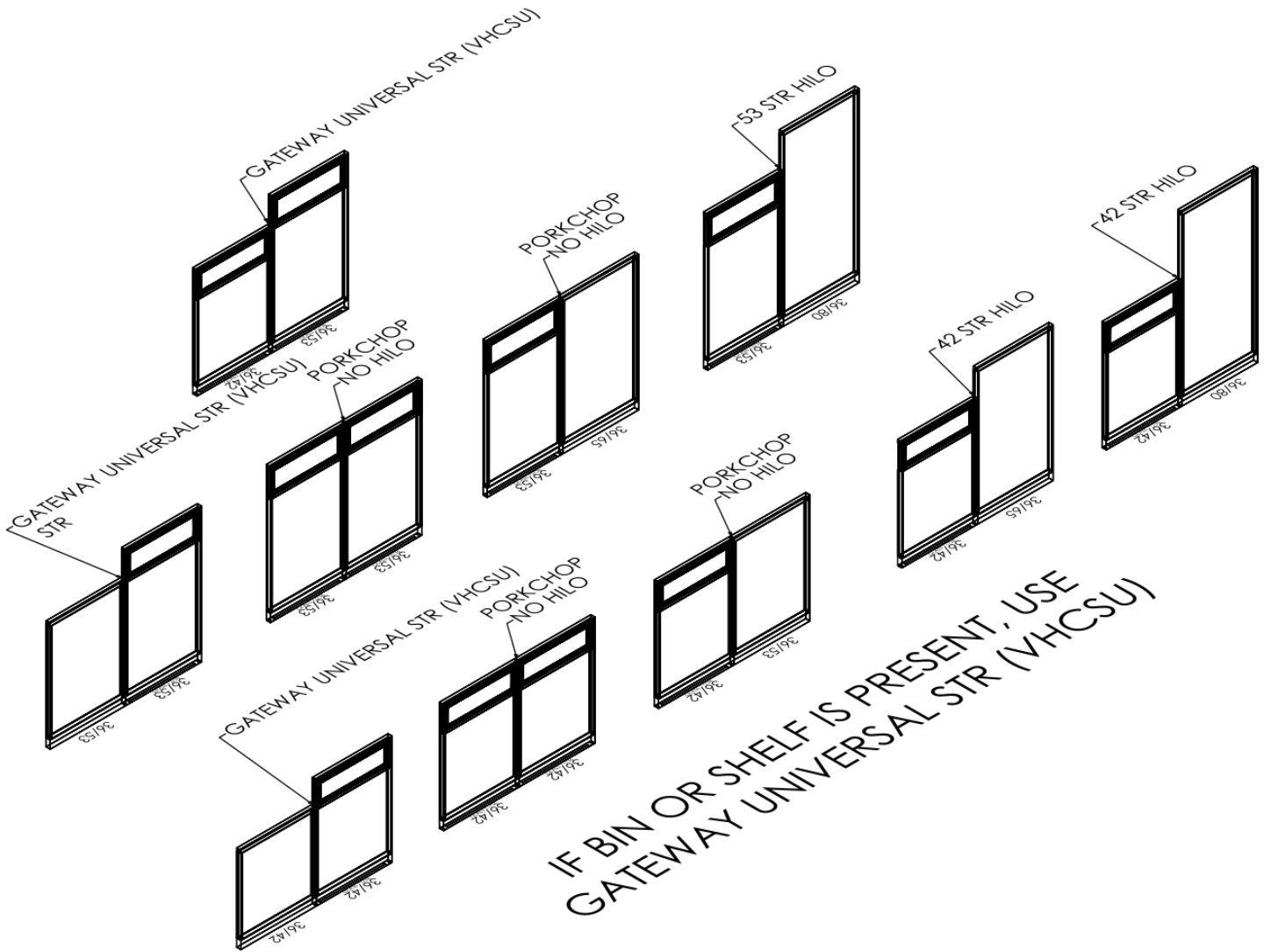
For Technical Assistance Please Call Gateway Office Furniture at 800.815.1224 or email support@gatewayofficefurniture.com

For panels of the same height a standard Avenir porkchop style connector can be used for panel to panel connections.

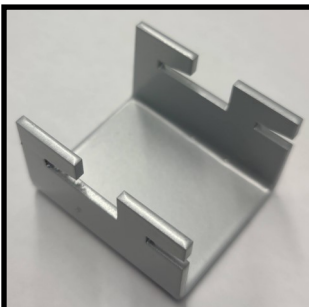


For Technical Assistance Please Call Gateway Office Furniture at 800.815.1224 or email support@gatewayofficefurniture.com

For straight connections please follow connector guidelines below



IF BIN OR SHELF IS PRESENT, USE
GATEWAY UNIVERSAL STR (VHCSU)



Gateway Universal Straight HiLo Connector VHCSU

For Technical Assistance Please Call Gateway Office Furniture at 800.815.1224 or email support@gatewayofficefurniture.com

