

Screen Bracket Installation

STRETCH™

Universal Screens Brackets include hardware for various mounting options. Use to attach to the backs and sides of single work surfaces, in between (back to back) surfaces, and panel frames. Brackets may be attached to work surface thicknesses from 1" to 1 ½", and will accommodate metal, fabric, glass, and acrylic screens from ¼" to ½" thick. Below are the parts included with each Universal Screen Bracket kit.



- 1 - Screen Bracket
- 1 - Screen Bracket bolt 10mm x 50mm with ultra profile head
- 1 - Screen Bracket bolt cover
- 1 - 5 Hole flat plate with threaded holes
- 2 - 13mm Rubber Inserts
- 2 - 9mm Rubber Inserts
- 3 - Wood Screws #12 x 1"



GATEWAY office furniture

800.815.1224 | gatewayofficefurniture.com

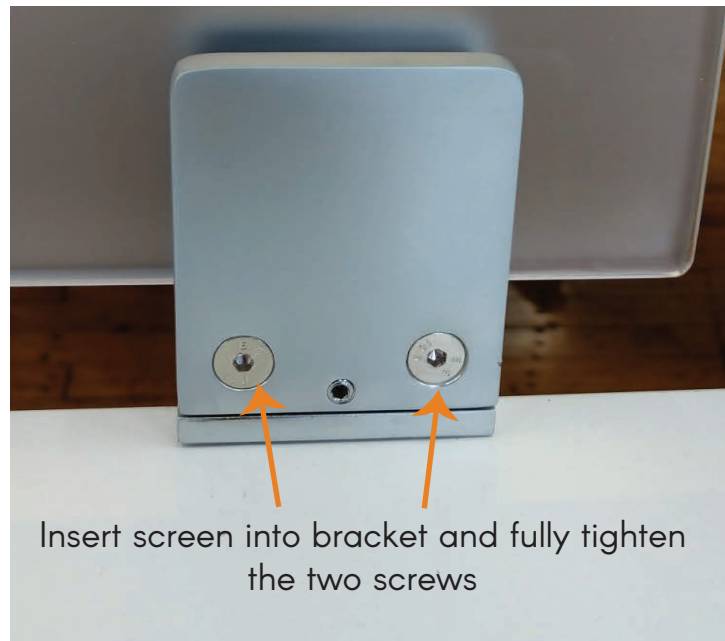
Instructions for work surface attachment

Universal Screens Brackets include hardware for various mounting options.
Two brackets are required per screen, up to 72" wide.

Thread bracket down until it clamps the worksurface. Install two woodscrews through 5 hole bar into bottom side of worksurface.



Clip cosmetic bolt cover onto bolt as shown in the picture below



Instructions for panel frame attachment

Two brackets are required per screen, up to 72" wide. Drill holes (approx 1/4") in panel top caps where brackets will be located. They should be 5"-6" from each end of the panel.

Attachment bolts required: 5mm, round head, Phillips. Length and type depend on the panel system manufacturer you're working with. (self tapping may be required to secure to frame.

Allen Wrenchs required: 1/8" & 3/32" for bracket installation.

Remove one side of bracket and attach brackets to top cap. be sure to install so that the finished side of the bracket is facing the desired direction.

Re-attach side of bracket, do not tighten. Carefully slide glass into sleeve and tighten bracket to secure, sequence below.



Loosen enough so the Screw Heads project above the Clamp



Slightly tighten the Allen Screw so the Plate tilts at a slant



Secure the Flat Head Screws for Maximum Clamping Strength